

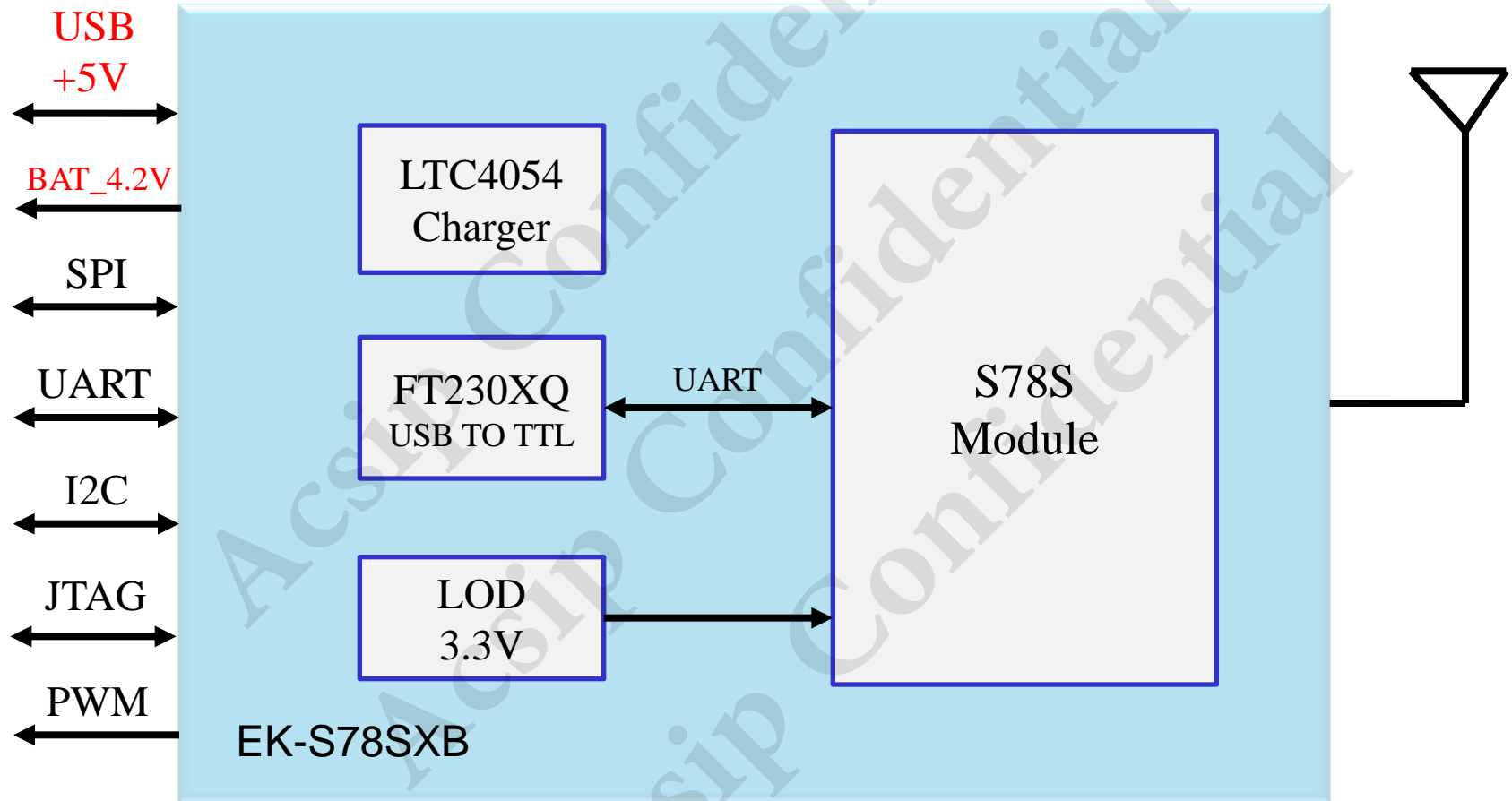
EK-S78SXB User Guide

2017/08/22

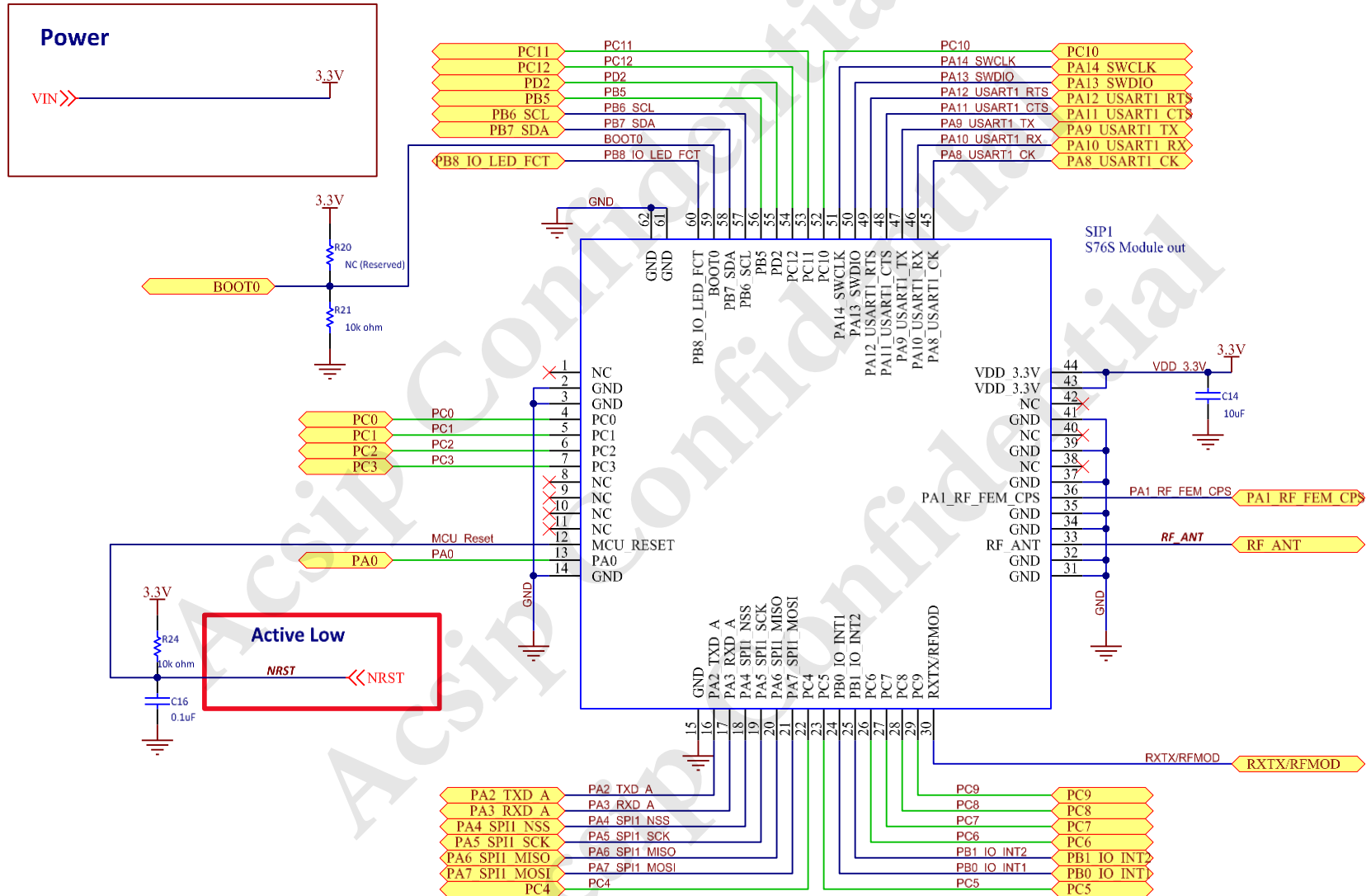


An IoT Solution Company

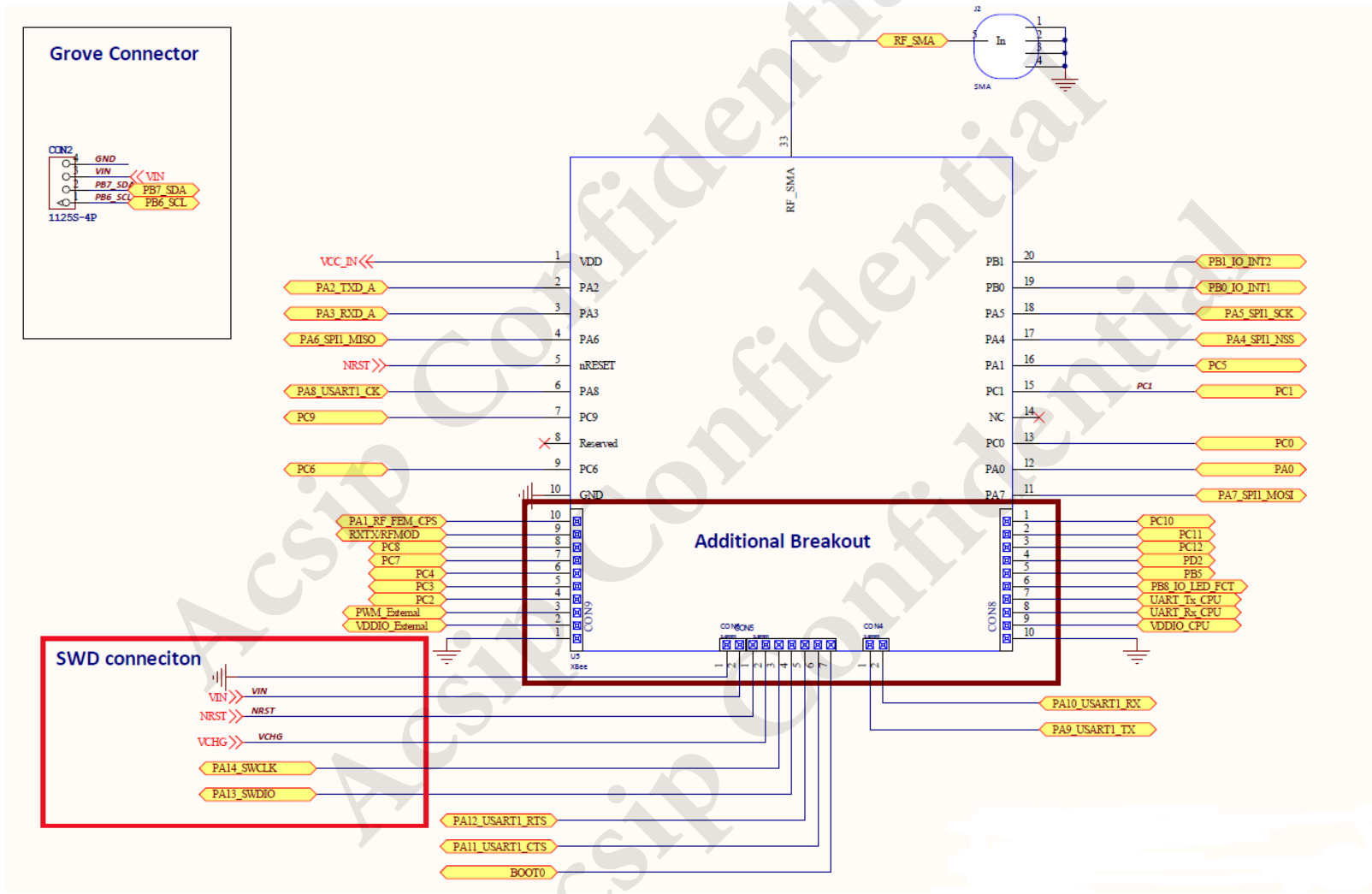
Block diagram



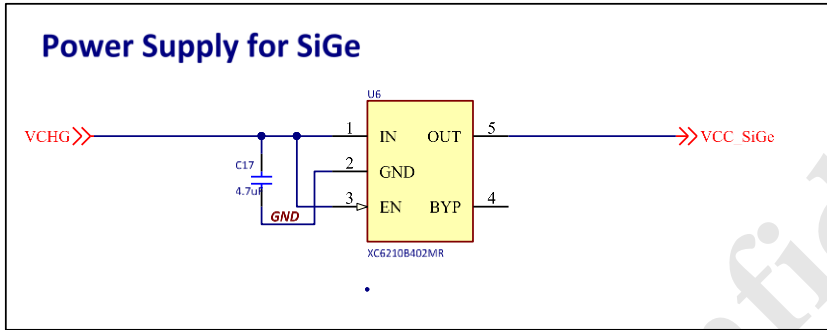
S78S Breakout Schematic



XBee Breakout Schematic

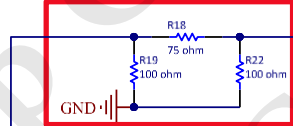


Front-End Schematic (only available on S76S)



Attenuator for PA I/P power tuning

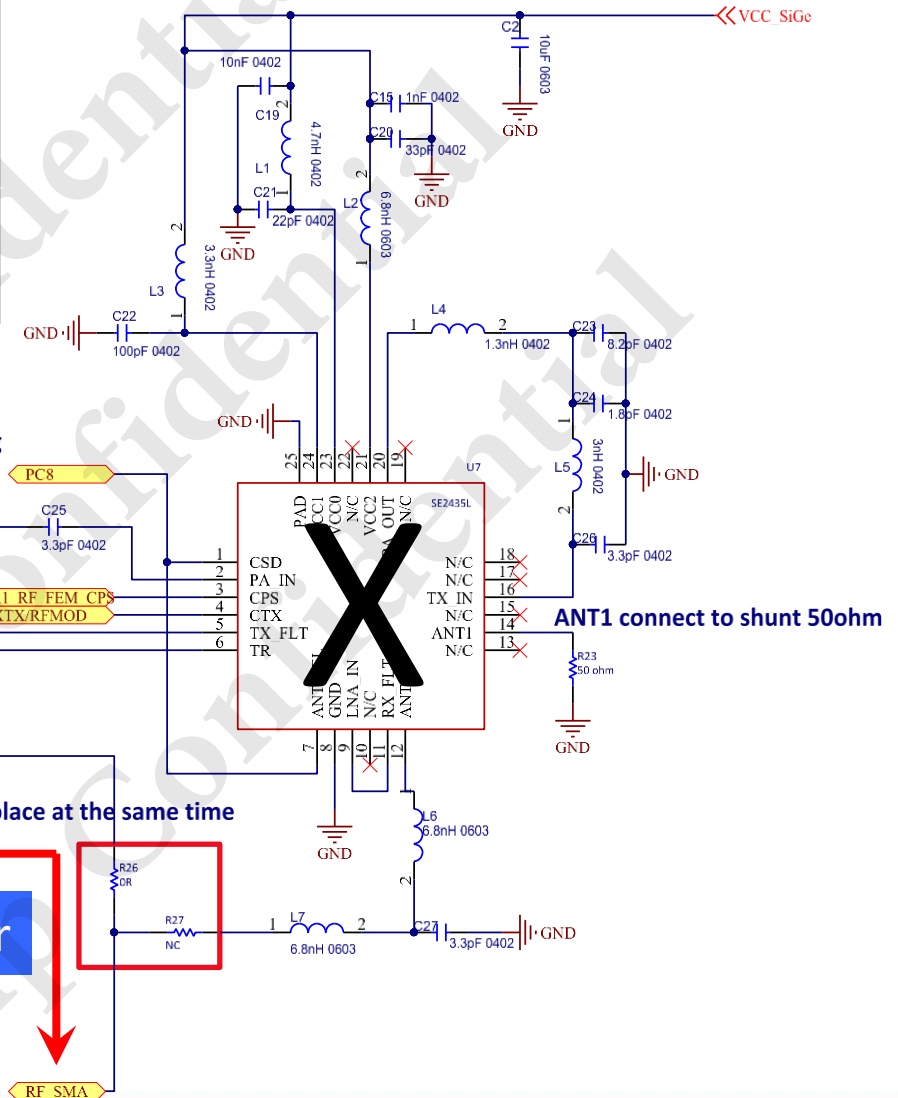
Attenuation = 10dB



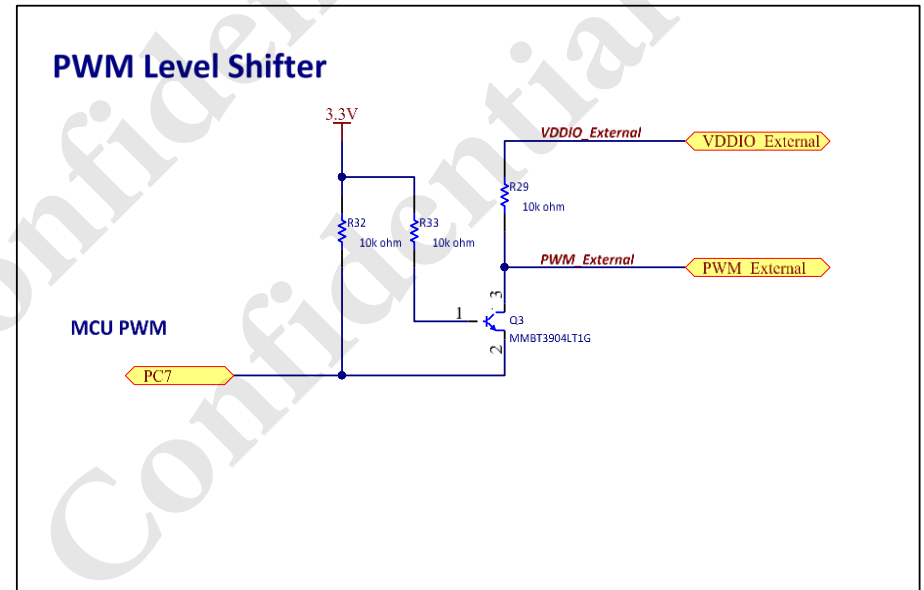
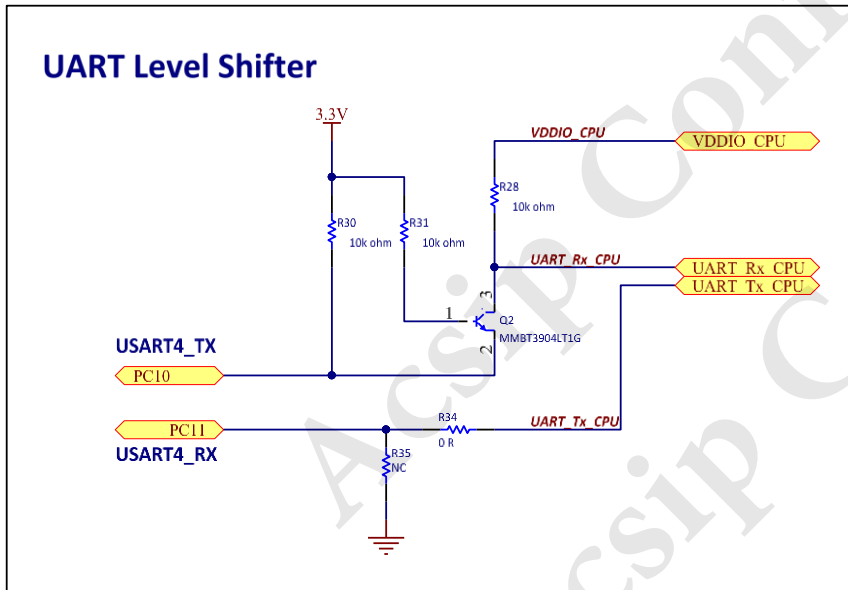
RF ANT

Co-Pad, one path take place at the same time

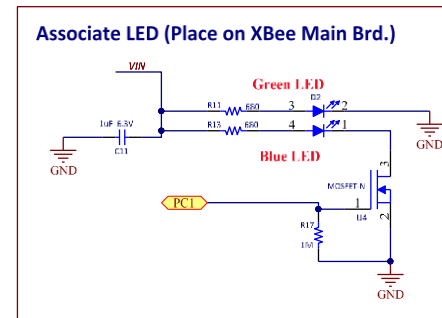
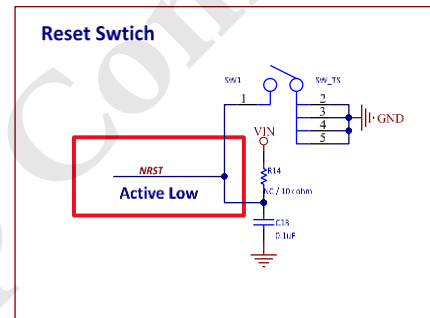
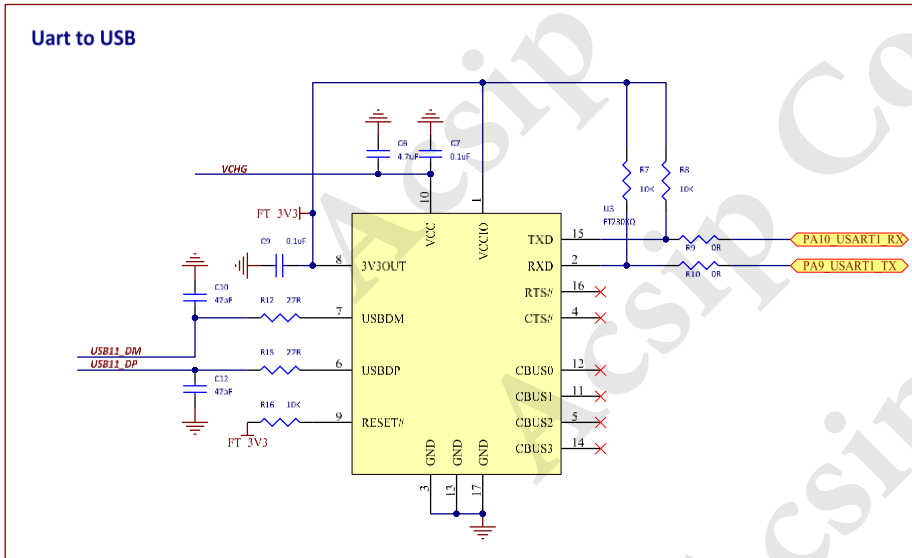
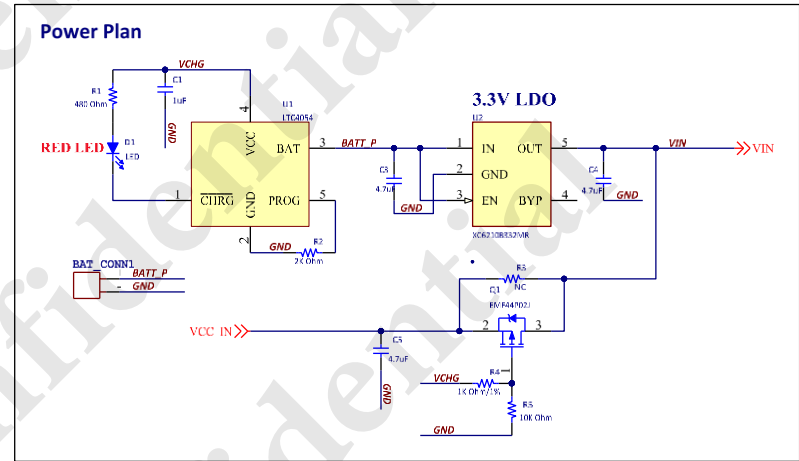
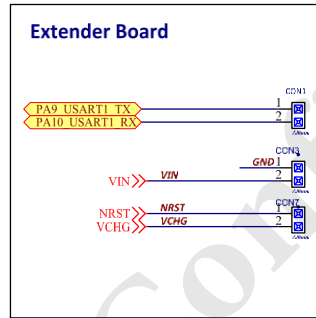
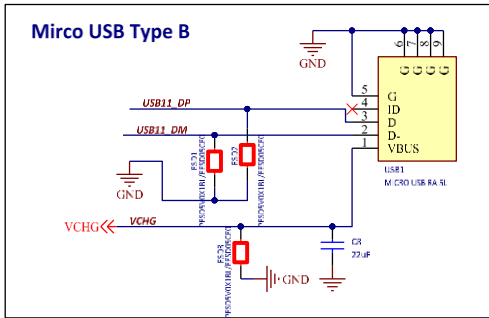
RF bypass to SMA connector



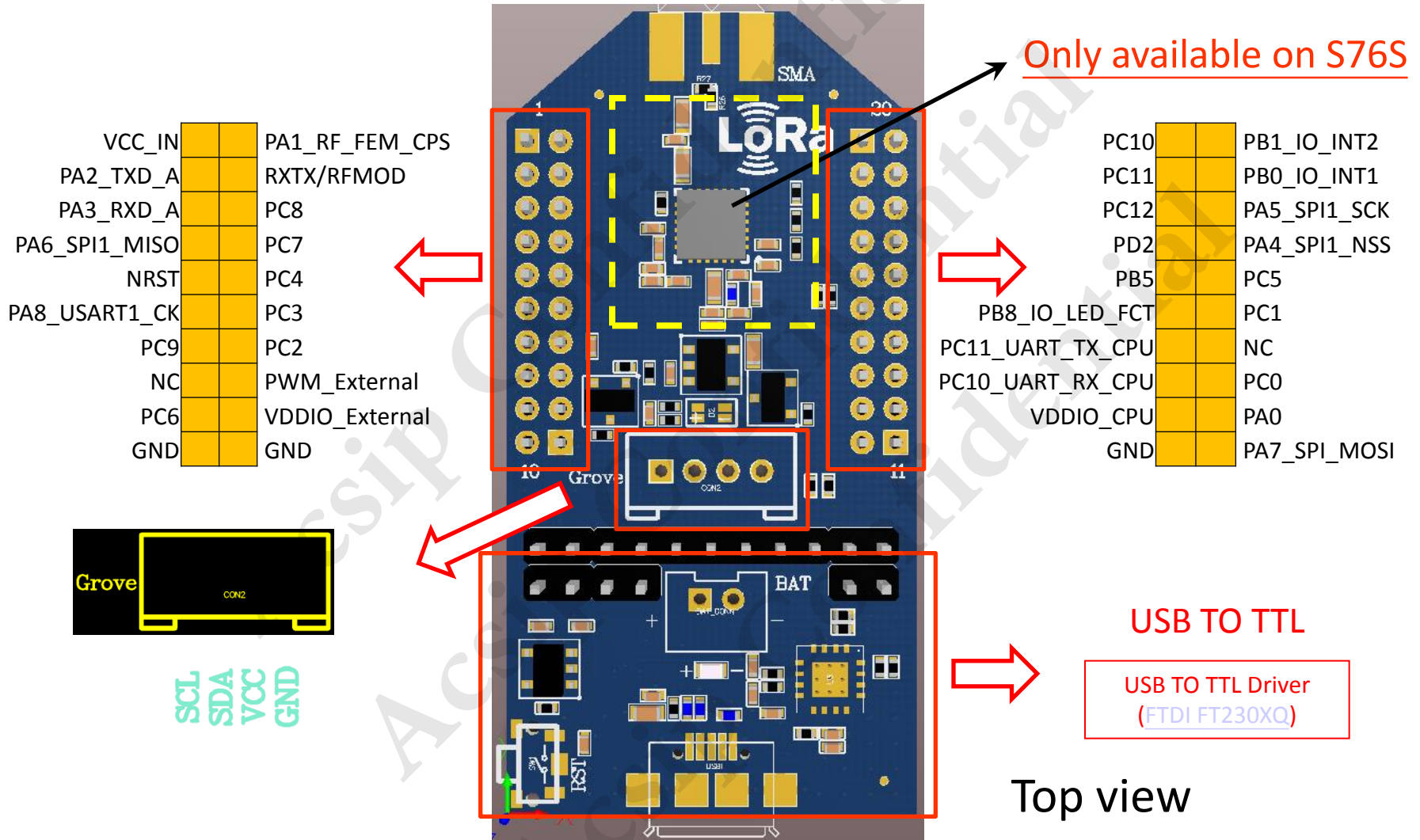
Level Shifter Schematic



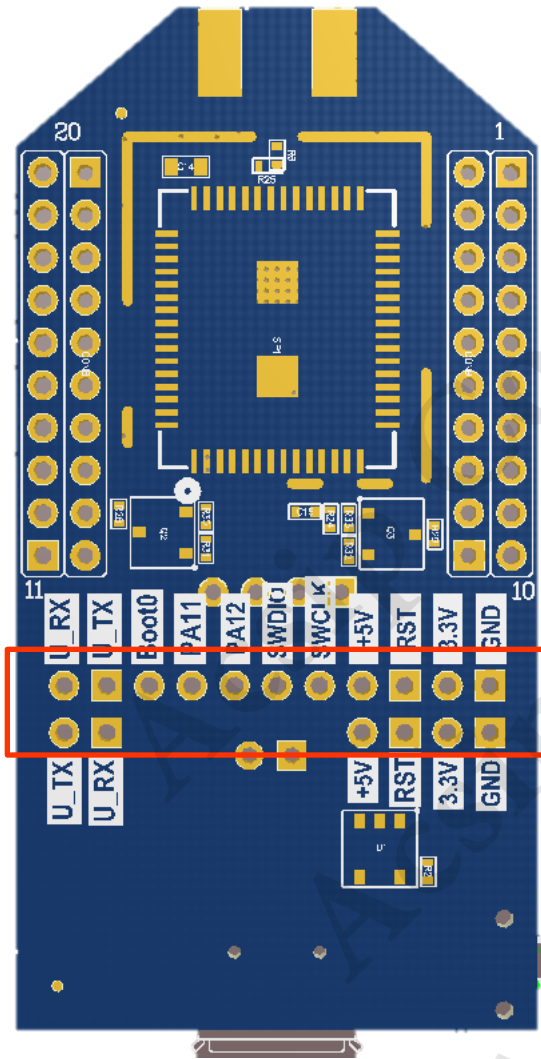
EE Port Schematic



Breakout Pin Definition

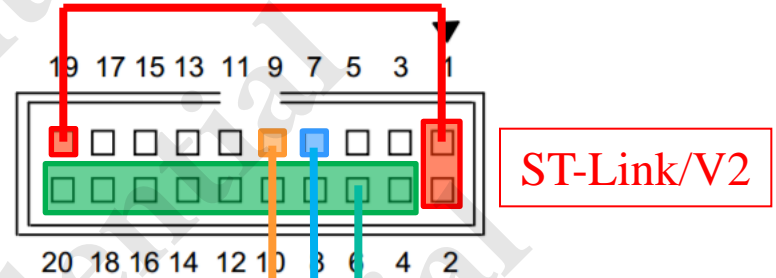


Breakout Pin Definition

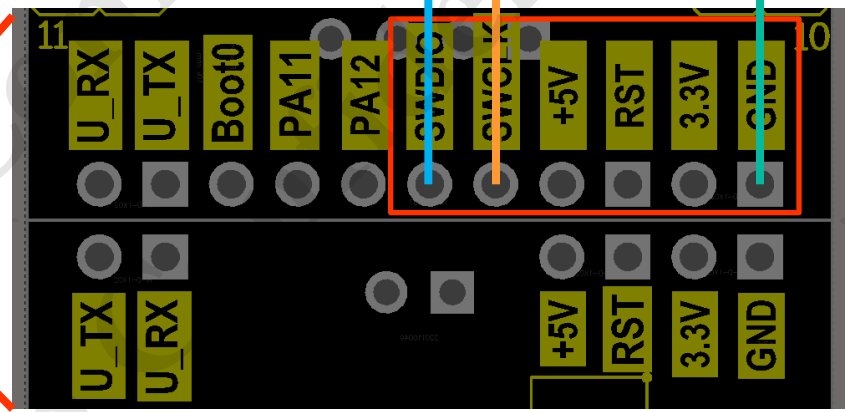


SWD Wiring

- 1,2:TVCC
- 6 :GND
- 7 :SWDIO/TMS
- 9 :SWCLK/TCK
- 19 :3.3V

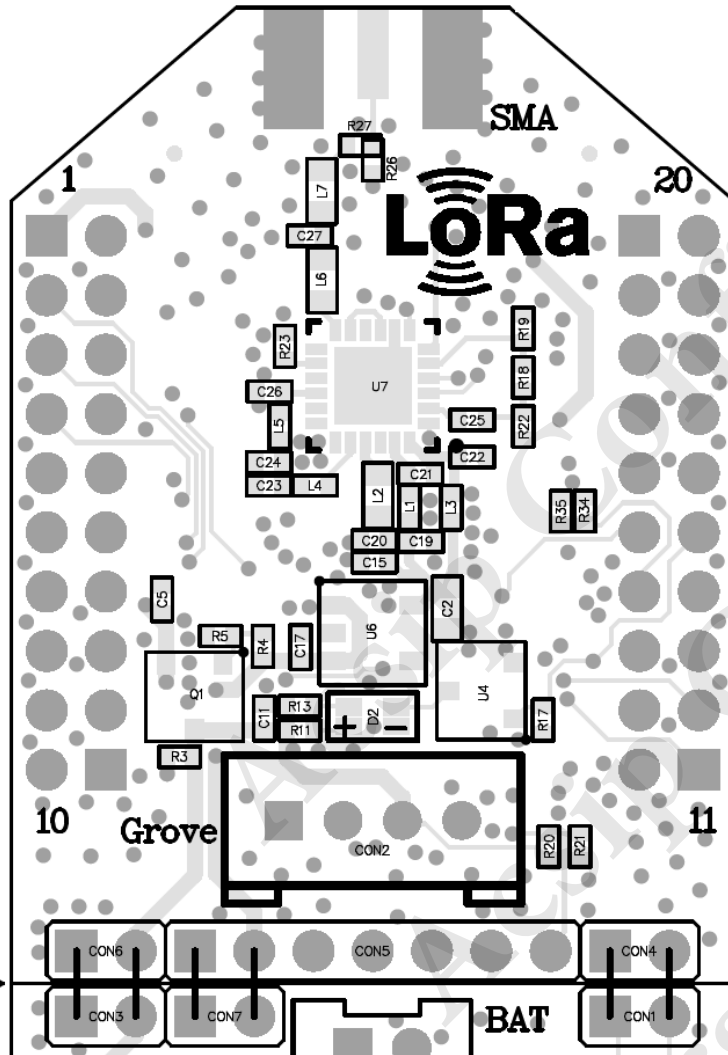


ST-Link/V2

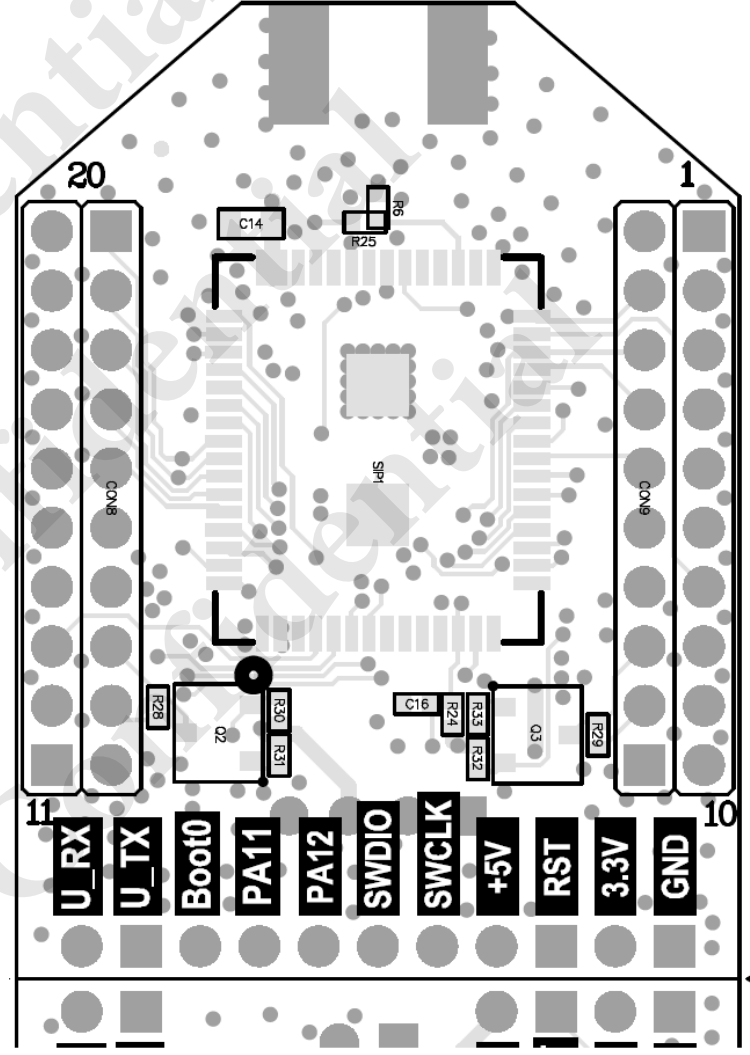


Bottom view

Component Location

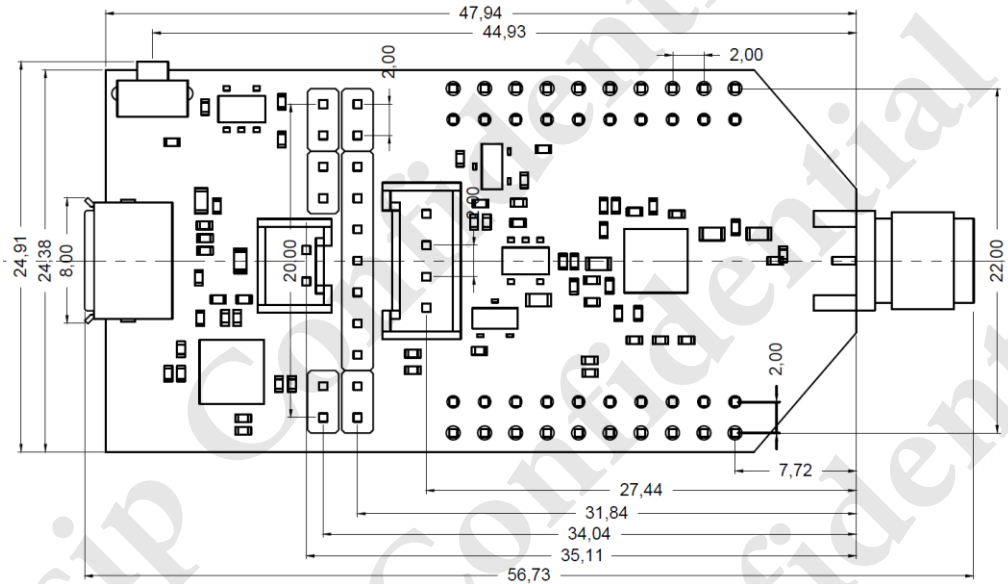


Top view

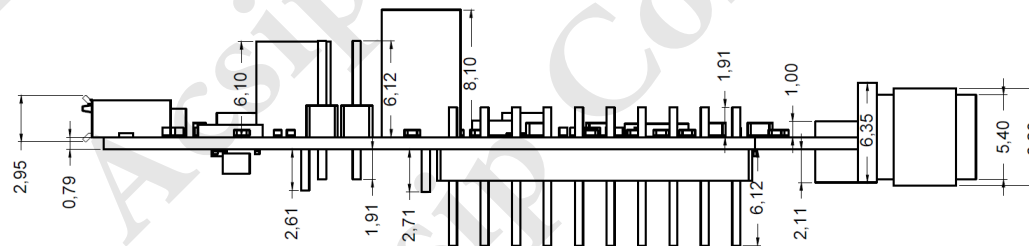


Bottom view

Mechanical Drawings



Top view



Side view